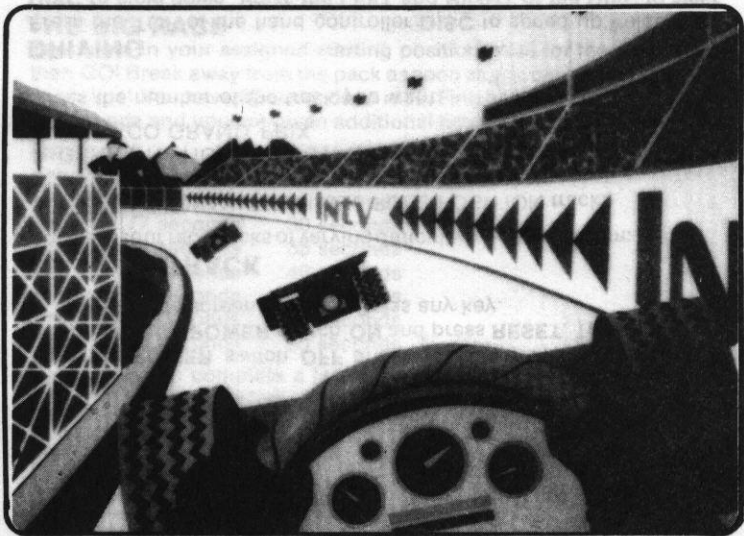


IntelliVision™ Intelligent Television

POLE POSITION



INSTRUCTIONS

No. 9004

OBJECT OF THE GAME

Take a lap around one of four tracks, passing other cars. If you complete the lap fast enough, you qualify for one of the top five starting positions in the big race!

TO BEGIN

Turn the **POWER** switch **OFF** and insert the **POLE POSITION** cartridge. Turn **POWER** switch **ON** and press **RESET**. The **POLE POSITION** title screen appears. Press any key.

SELECT A TRACK

You have four racetracks of varying difficulty to choose from:

1. FUJI SPEEDWAY (The classic **POLE POSITION** track!)
2. MADISON 500
3. GRAND NATIONAL
4. MONACO GRAND PRIX

Press the number of the track you want.

DRIVING

Press the **TOP** of the hand controller **DISC** to speed up; release the **DISC** to slow down. Press the **LEFT** and **RIGHT** of the **DISC** to steer. Pressing **LEFT** or **RIGHT** on the **TOP** half of the **DISC** will cause you to speed up while turning; pressing **LEFT** or **RIGHT** on the **BOTTOM** half of the **DISC** will keep your speed constant while turning.

You begin in low gear (indicated by the gear shift knob at the upper right of the screen being **UP**). To shift into high gear, press either **BOTTOM SIDE ACTION KEY**. High gear is indicated by the gear shift knob being **DOWN**. Shift back into low by pressing either **TOP SIDE ACTION KEY**.

CRASH!

Hit another car or a billboard and ka-BOOM! your car goes up in flames. Don't worry — plenty more where that came from. As long as you have time remaining, you're given a new car. Keep going — and try to make up for lost time!

QUALIFYING

To qualify for the big race, you must complete one lap of the racetrack in under 75 seconds. Wait for the green light, then gun it! Be careful! You're not alone on the track. The qualifying lap ends if you reach the finish line in under 75 seconds, otherwise you can continue until 90 seconds have elapsed (you did not qualify — game is over). If you have completed the lap in less than 75 seconds, you qualify for one of the top five positions in the big race. Your starting position is determined by your qualifying lap time:

STARTING POSITION	LAP TIME	BONUS POINTS
5	less than 75 seconds	800
4	less than 71 seconds	1000
3	less than 69 seconds	1400
2	less than 67 seconds	2000
1 (POLE POSITION!)	less than 65 seconds	4000

THE BIG RACE

You begin in your assigned starting position. Wait for the green light, then GO! Break away from the pack as soon as you can and head for the finish line! You have 90 seconds to race. Finish the first lap in less than 85 seconds and you are given additional time to complete the next lap:

FIRST LAP	BONUS TIME
less than 85 seconds	20 seconds
less than 81 seconds	25 seconds
less than 77 seconds	30 seconds
less than 75 seconds	35 seconds
less than 71 seconds	40 seconds
less than 69 seconds	45 seconds
less than 67 seconds	50 seconds
less than 65 seconds	60 seconds

Every time you complete a lap in the given time, you are given more time. But watch out! More cars appear on the track with each new lap!

SCORING

Every .005 miles completed is worth 10 points; each of the four courses is a slightly different length, but a lap around any of them earns approximately 5,000 points. You also get 50 points for each car you pass, and bonus points for qualifying (see QUALIFYING, above). Your score appears in the upper left of the screen.

THE CLOCKS

Next to your score are two clocks: your time remaining (TM) and your lap time (LAP). TM shows the number of seconds you have left. It starts at 90 and counts down to zero. If you earn extra time, it is added to TM. LAP counts the number of seconds it takes you to run the course. It starts at zero and counts up. When you cross the finish line, LAP freezes and blinks, showing your time for the lap. After blinking several times, it will switch to counting your current lap as you continue around the track.

END OF THE RACE

The race ends when you run out of time (TM counts down to 0). To race again, press any number on the **KEYPAD**.

STRATEGY TIPS

Shift to low gear to slow down **FAST!** Shift into low for just a moment or two for extra maneuverability through a tight pack of cars!

Always start in low gear. If you crash, shift into low gear immediately.

Shift from low gear to high around 130mph for best acceleration.

Watch the road signs to prepare for turns!

You can drive on the grass, but it will slow you down. Still, you may want to use the grass now and then for passing. Just watch out for road signs!

Distributed by

INTV CORPORATION

Torrance, CA 90505.

© Intellivision. All Rights Reserved.

*Trademark of Namco Ltd. used under license.